





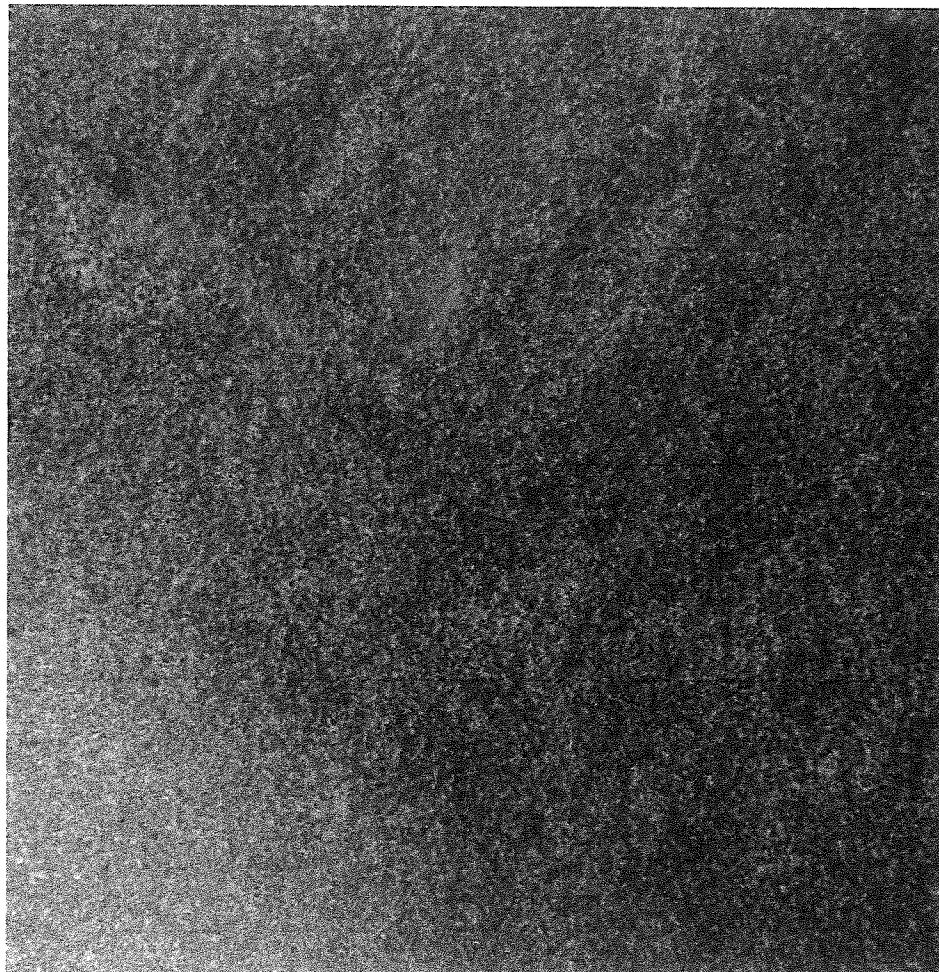
Sample as Received



Table 1.

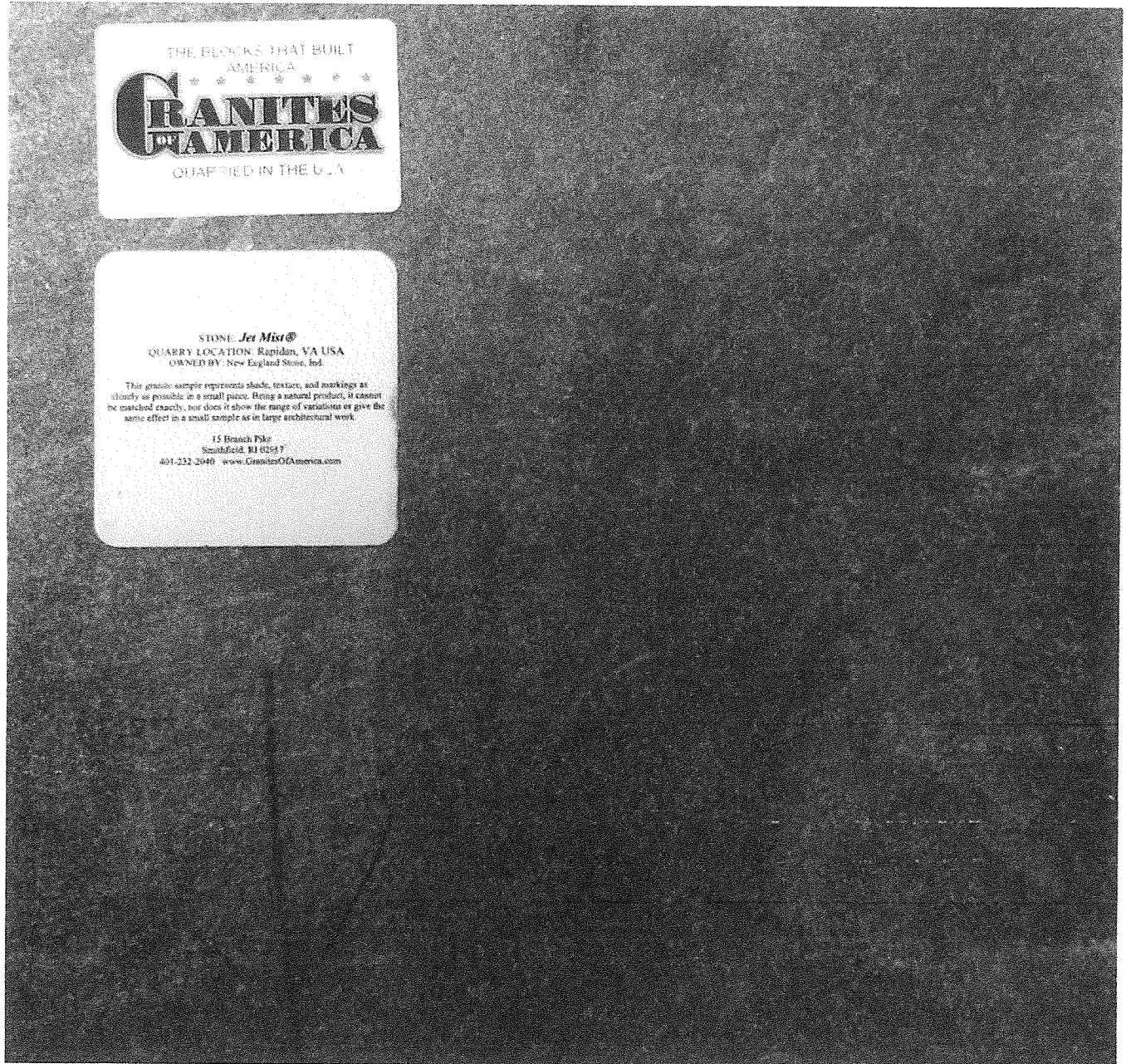
Wet DCOF Value ( $\mu$ D)	Slip Resistance Potential	Action
>0.45 (inclines) >0.42 (level)	High - Lower probability of slipping	Monitor DCOF regularly and maintain cleanliness.
0.30 - 0.45 (inclines) 0.30 - 0.42 (level)	Acceptable - Increased probability of slipping	Monitor DCOF regularly and maintain cleanliness. Consider traction enhancing products and practices where applicable for intended use
< 0.30	Low - Higher probability of slipping	Seek professional intervention. Consider replacing flooring and/or coating with high traction products.

See NOTE in Standard for additional information on Table 1.



Sample as Received  
Finished Side





Sample as Received  
Reverse Side



Sample Under Test

© 2020 by Testing Engineers International, Inc. CAVEAT: This certificate may not be reproduced except in full, without the expressed written consent of TEI-Testing Services, LLC. Note: The values in this certificate are the values obtained under standard test conditions as reported in the appropriate Report of Test and thus may be used for purposes of demonstrating compliance or for comparison with other units tested under the same standard. The results do not indicate the function of the sample(s) under nonstandard or field conditions. Statement of Risk: Client understands and agrees that declarations of conformity are made by directly comparing the measurement results against the test limits given in the standard without consideration to factors that may contribute to measurement uncertainty, and accepts the shared risk that arises from this approach. This certificate gives the characteristics of the sample(s) submitted for testing only. It does not and may not be used to certify the characteristics of the product, nor to imply that the product in general meets the requirements of any standard, nor its acceptability in the marketplace. TEI stylized lettering and logo are registered trademarks and use is by contract and/or written permission only. TEI-Testing Services is a wholly owned LLC of Testing Engineers International, Inc.